



# Resource Directory



**Big Country**  
Human Trafficking Coalition

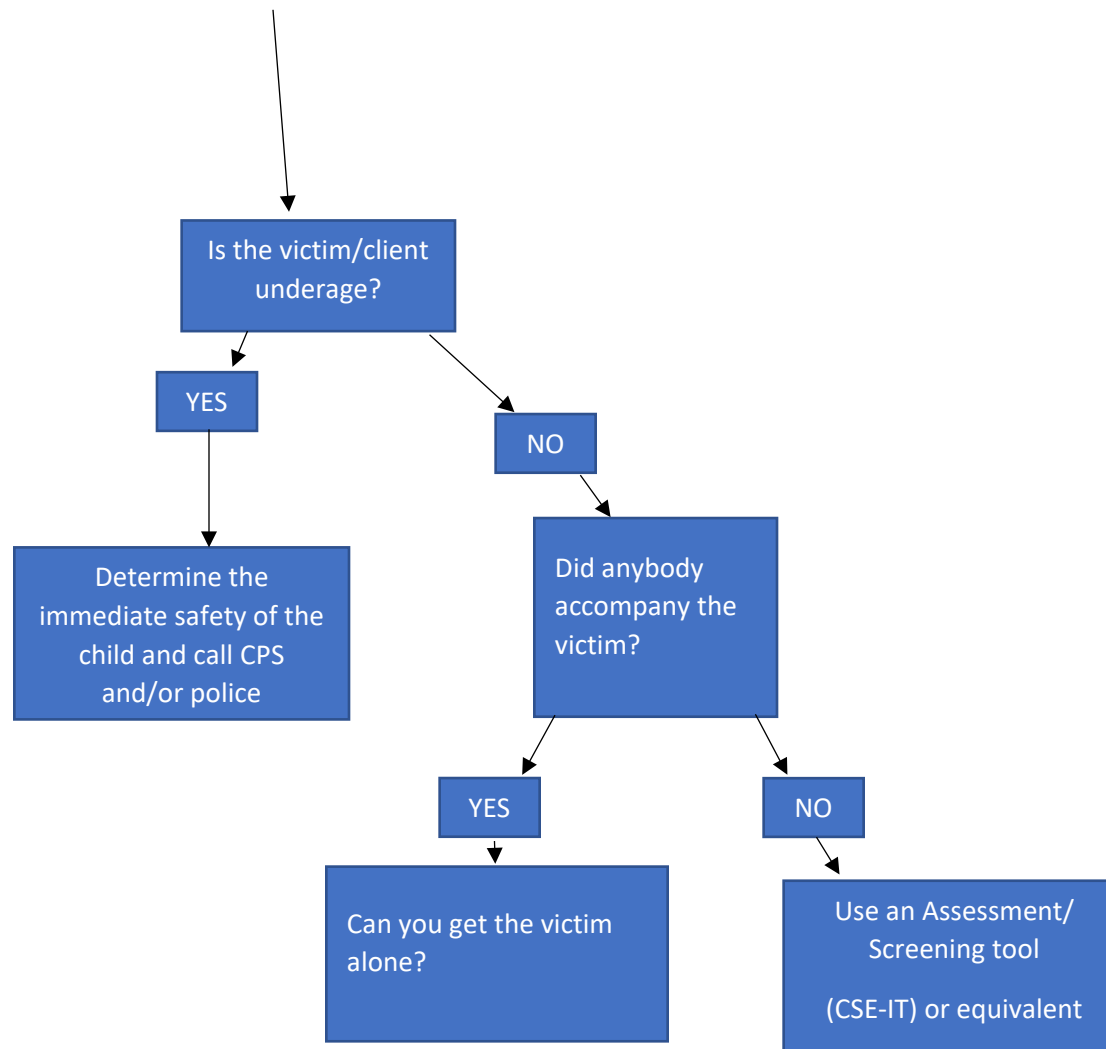


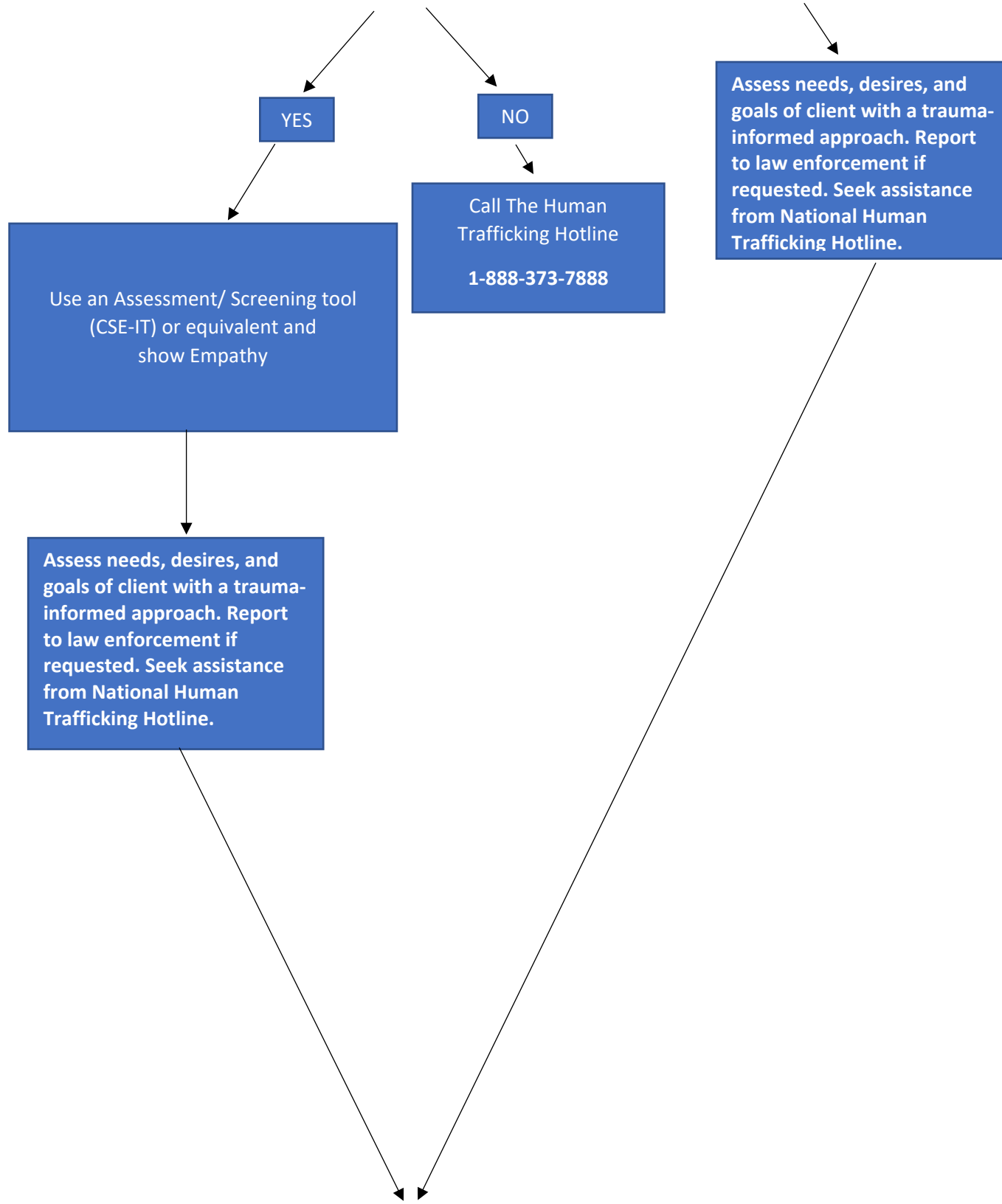
## Are There Any Signs for Human trafficking?

- Person appears to be fearful, anxious, or submissive
- Overly sexual for age or situation
- Unexplained injuries, signs of abuse
- Clothing does not fit the weather
- Person has jewelry, shoes, multiple phones, hotel key cards, or money without having any source of income
- Multiple Social Media Accounts
- A person's identification documents are held by another person, and they are not free to come and go
- Works excessively long or unusual hours with very little pay

**National Human Trafficking Hotline:**

**1-888-373-7888**





YES

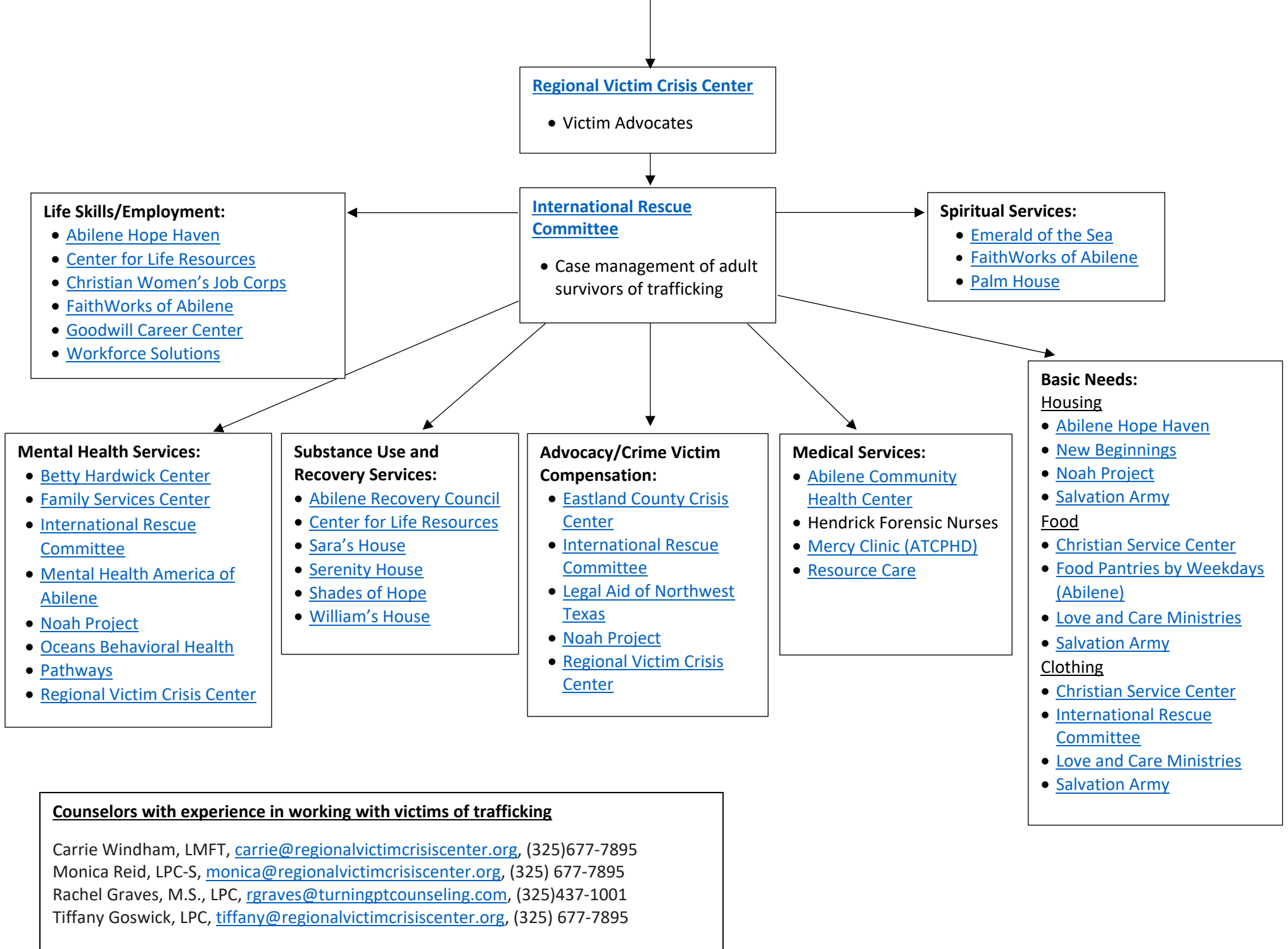
NO

Use an Assessment/ Screening tool (CSE-IT) or equivalent and show Empathy

Call The Human Trafficking Hotline  
1-888-373-7888

Assess needs, desires, and goals of client with a trauma-informed approach. Report to law enforcement if requested. Seek assistance from National Human Trafficking Hotline.

Assess needs, desires, and goals of client with a trauma-informed approach. Report to law enforcement if requested. Seek assistance from National Human Trafficking Hotline.



## Resource Directory

### All Organizations

[Abilene Community Health Center](#); [Abilene Hope Haven](#); [Abilene Recovery Council](#); [Audrey Grace House-New Horizons](#); [BCFS-Our House](#); [Ben Richey Boys Ranch](#); [Betty Hardwick Center](#); [Beyond Trafficking](#); [Big Country CASA](#); [Center for Life Resources](#); [Child Care Services](#); [Christian Homes](#); [Christian Service Center](#); [Christian Women's Job Corps of Abilene](#); [Eastland County Crisis Center](#); [Education Service Center](#); [Emerald of the Sea](#); [FaithWorks of Abilene](#); [Family Services Center](#); [Goodwill Career Center](#); [Goodwill-West Texas](#); [HSU Social Work Department](#); [Harmony Family Services](#); [Hendrick Home for Children](#); [International Rescue Committee](#); [Kinship Navigator Program-New Horizons](#); [Legal Aid of Northwest Texas](#); [Love and Care Ministries](#); [Mental Health America of Abilene](#); [Mercy Clinic \(ATCPHD\)](#); [New Beginnings](#); [Noah Project](#); [Oceans Behavioral Health Abilene](#); [Palm House](#); [Pathways](#); [Project Phoenix Program-YMCA](#); [Regional Victim Crisis Center](#); [Resource Care](#); [Safe Families](#); [Salvation Army](#); [Sara's House](#); [Serenity House](#); [Shades of Hope](#); [STAR Program-New Horizons](#); [Texas Tech University Health Sciences Center](#); [United Way Abilene](#); [William's House](#); [Workforce Solutions](#)

### Categories

[Academia and Education \(3\)](#) [Advocacy \(8\)](#) [Child Welfare \(14\)](#) [Clothing/Hygiene \(4\)](#) [Employment \(3\)](#) [Faith-based \(9\)](#) [Food Pantry/Meal Programs \(4\)](#) [Healthcare Provider \(3\)](#) [Housing/Shelter \(9\)](#) [Labor Trafficking \(2\)](#) [Legal Assistance \(3\)](#) [Sex Trafficking \(4\)](#) [Sexual Assault/Domestic Violence/Family Violence \(4\)](#) [Substance Use \(5\)](#) [Treatment and Counseling \(21\)](#) [Services Outside the Area \(7\)](#)

### Academia and Education (3)

[Education Service Center](#); [HSU Social Work Department](#); [Texas Tech University Health Sciences Center](#)

Advocacy (8)

[Big Country CASA](#); [Eastland County Crisis Center](#); [International Rescue Committee](#); [Legal Aid of Northwest Texas](#); [Mental Health America of Abilene](#); [Noah Project](#); [Palm House](#); [Regional Victim Crisis Center](#)

Child Welfare (14)

[Audrey Grace House-New Horizons](#); [BCFS-Our House](#); [Ben Richey Boys Ranch](#); [Big Country CASA](#); [Child Care Services](#); [Christian Homes](#); [Harmony Family Services](#); [Kinship Navigator Program-New Horizons](#); [Pathways](#); [Project Phoenix Program-YMCA](#); [Safe Families](#); [Shades of Hope](#); [STAR Program-New Horizons](#); [Workforce Solutions](#)

Clothing/Hygiene (4)

[Christian Service Center](#); [International Rescue Committee](#); [Love and Care Ministries](#); [Salvation Army](#)

Employment (3)

[Christian Women's Job Corps of Abilene](#); [FaithWorks of Abilene](#); [Goodwill Career Center](#)

Faith-based (9)

[Beyond Trafficking](#); [Christian Homes](#); [Christian Service Center](#); [Christian Women's Job Corps of Abilene](#); [Emerald of the Sea](#); [FaithWorks of Abilene](#); [New Beginnings](#); [Palm House](#); [Safe Families](#)

Food Pantry/Meal Programs (4)

[Christian Service Center](#); [Love and Care Ministries](#); [Salvation Army](#); [Food Pantries by Weekdays \(Abilene\)](#)

Healthcare Provider (3)

[Abilene Community Health Center](#); [Mercy Clinic \(ATCPHD\)](#); [Resource Care](#)

Housing/Shelter (9)

[Abilene Hope Haven](#); [Audrey Grace House-New Horizons](#); [BCFS-Our House](#); [Ben Richey Boys Ranch](#); [Harmony Family Services](#); [Hendrick Home for Children](#); [New Beginnings](#); [Noah Project](#); [Salvation Army](#)

Labor Trafficking (2)

[International Rescue Committee](#); [Mercy Clinic \(ATCPHD\)](#)

Legal Assistance (3)

[Legal Aid of Northwest Texas](#); [International Rescue Committee](#); [Noah Project](#)

Sex Trafficking (4)

[Emerald of the Sea](#); [Mercy Clinic \(ATCPHD\)](#); [Noah Project](#); [Regional Victim Crisis Center](#)

Sexual Assault/Domestic Violence/Family Violence (4)

[Eastland County Crisis Center](#); [Emerald of the Sea](#); [Noah Project](#); [Regional Victim Crisis Center](#)

Substance Use (5)

[Abilene Recovery Council](#); [Center for Life Resources](#); [Sara's House](#); [Serenity House](#); [William's House](#)

Treatment and Counseling (21)

[Abilene Hope Haven](#); [Abilene Recovery Council](#); [Audrey Grace House-New Horizons](#); [Betty Hardwick Center](#); [Center for Life Resources](#); [FaithWorks of Abilene](#); [Family Services Center](#); [Goodwill-West Texas](#); [International Rescue Committee](#); [Kinship Navigator Program-New Horizons](#); [Oceans Behavioral Health Abilene](#); [Pathways](#); [Project Phoenix Program-YMCA](#); [Regional Victim Crisis Center](#); [Resource Care](#); [Salvation Army](#); [Sara's House](#); [Serenity House](#); [Shades of Hope](#); [STAR Program-New Horizons](#); [William's House](#)

Services Outside the Area (7)

Substance Abuse Treatment – Youth (7)

[Cenikor](#); [Nexus](#); [Phoenix House](#); [Reed Adolescent Center](#); [Selena Center](#); [Tarrant Youth Recovery Campus](#); [Unlimited Visions](#)

### **Counselors with experience in working with victims of trafficking**

Carrie Windham, LMFT, [carrie@regionalvictimcrisiscenter.org](mailto:carrie@regionalvictimcrisiscenter.org), (325) 677-7895

Monica Reid, LPC-S, [monica@regionalvictimcrisiscenter.org](mailto:monica@regionalvictimcrisiscenter.org), (325) 677-7895

Rachel Graves, M.S., LPC, [rgraves@turningptcounseling.com](mailto:rgraves@turningptcounseling.com), (325) 437-1001

Tiffany Goswick, LPC, [tiffany@regionalvictimcrisiscenter.org](mailto:tiffany@regionalvictimcrisiscenter.org), (325) 677-7895

[Back to Top](#)

## Abilene Community Health Center

**Phone:** 325-696-0600

**Address:** 1749 Pine Street, Abilene, TX 79601

**Website:** [Abilene Community Health Center | Texas Tech University Health Sciences Center \(ttuhsc.edu\)](http://AbileneCommunityHealthCenter|TexasTechUniversityHealthSciencesCenter(ttuhs.edu))

**Type of Agency:** Healthcare Provider

**Clients Served:** Serves ALL ages

**Services Provided:**

- Walk-in
- Primary Care for all ages
- Prescription Assistance
- Immunization
- Care Management
- Physical Exams for all ages
- Minor Injuries
- Behavioral Services
- Counseling Services



## Abilene Hope Haven

**Phone:** 325-677-4673

**Address:** 801 South Treadaway, Abilene, TX 79602

**Website:** [Abilene Hope Haven, Inc. \(www.abilenehopehaven.org\)](http://www.abilenehopehaven.org)

**Type of Agency:** Housing/Shelter, Treatment and Counseling

**Clients Served:** Legally married with or without children or a single parent, children must be 10years or younger

**Services Provided:**

- Food
- Clothing
- Shelter
- Transportation
- Safety
- Employment skills training
- Job placement assistance
- Self-improvement training
- Educational opportunities
- Drug and alcohol counseling
- Permanent residency counseling

- Residents may stay up to 12 months
- Residents are required to maintain a full-time 40 hour per week job, return to school for their GED (if required) and remain 100% drug and alcohol free.

## Abilene Recovery Council

**Email:** [Region2OSAR@abirecovery.org](mailto:Region2OSAR@abirecovery.org)

**Phone:** 325-673-2242

**Address:** 104 Pine St, Suite 205, Abilene, Tx 79601

**Website:** [Abilene Recovery Council \(abirecovery.org\)](http://AbileneRecoveryCouncil(abirecovery.org))

**Service Areas:** Health and Human Services Region 2 (30 counties). Some services are limited to specific counties

**Type of Agency:** Substance Use Prevention, Treatment and Recovery

**Clients Served:** All ages, depending on service

### Services Provided:

- Community Coalition Partnership (CCP)
  - The CCP is a program that partners with a local coalition, Taylor Alliance for Prevention (TAP), to address substance use issues which affect youth and young adults such as underage drinking, marijuana, tobacco & nicotine products, and prescription drug misuse.
- Prevention Resource Center (PRC)

- The PRC serves as the central data collection repository and substance use prevention training liaison for HHS Region 2. PRC staff build collaborative relationships with regional communities to identify their needs and gather data and resources for requested presentations and the Regional Needs Assessment (RNA) that is available to the public. The PRC also conducts media awareness campaigns to address underage drinking, marijuana, tobacco/nicotine use, prescription drug misuse, and behavioral health promotion. Minor and tobacco prevention strategies also include community education, and tobacco/nicotine retailer education efforts.
- YP
  - The evidence based “Positive Action” curriculum is delivered by our Prevention Specialists to students in grades 2 through 9 with the program occurring in 10-12 sessions. Our prevention staff also offer positive alternatives, presentations, and community mobilization and education activities for schools and communities pertaining to minors using tobacco and nicotine products, alcohol (underage drinking), marijuana, and/or prescription drug misuse issues.
- Outreach, Screen, Assessment, and Referral (OSAR)
  - OSAR provides outreach services and assistance with substance use issues for individuals and their families and are offered free of charge to those seeking treatment and or referrals to other recovery support services. These services are provided to anyone 13 years and older in Health & Human Services Commission Region 2.
- Parenting Awareness Drug Risk Education Services (PADREs)

- PADREs program provides community-based intervention, case management, outreach services, and evidenced-based education to expectant parents and parents or guardians with children ages 6 & younger to decrease the impact of substance use on the family.
- Recovery Support Services (RSS)
  - The RSS Peer Recovery Coaches provide peer support from lived experiences to meet individuals where they are on their pathway to long term recovery. RSS provides support for basic needs, motivational coaching, intentional outreach, emotional support, and referral to services.

## Audrey Grace House – New Horizons

**Phone:** 325-437-2535

**Address:** 147 Sayles, Abilene, TX 79605

**Website:** [Audrey Grace House - New Horizons \(newhorizonsinc.com\)](http://newhorizonsinc.com)

**Type of Agency:** Child Welfare, Housing/Shelter, Treatment and Counseling

**Clients Served:** Ages 5-17.

**Services Provided:**

- Emergency Care Services
- Residential Treatment

## BCFS – Our House

**Phone:** 325-692-0033

**Address:** 303 S. Pioneer Dr., Suite 200, Abilene, TX 79605

**Website:** [Our House - Discover BCFS \(www.discoverbcfs.net/ourhouse/\)](http://www.discoverbcfs.net/ourhouse/)

**Type of Agency:** Child Welfare, Housing/Shelter

**Clients Served:** Ages 18-22

**Services Provided:**

- Transitional Living
- Assistance completing secondary education
- Help applying for college
- Locating stable employment
- Learning valuable life skills

## Ben Richey Boys Ranch

**Phone:** 325-692-2500

**Address:** 501 Ben Richey Drive, Abilene, TX 79602

**Website:** [Boys Ranch - Ben Richey Boys Ranch and Family Program \(www.benrichey.org\)](http://www.benrichey.org)

**Type of Agency:** Child Welfare, Housing/Shelter

**Clients Served:** Boys ages 6-14 OR single mothers and their children

**Services Provided:**

- Transitional Living
- Childcare facility, provides clean, comfortable and safe homes for boys.

**Notes:** Interview and background check necessary

## Betty Hardwick Center

**Phone:**

- Hotline: 1-800-758-3344
- Office: 325-690-5100

**Address:** 2626 S. Clack Abilene, TX 79606

**Website:** [Betty Hardwick Center Home - Slide JS - Betty Hardwick Center \(www.bettyhardwick.org\)](http://www.bettyhardwick.org)

**Type of Agency:** Treatment and Counseling

**Clients Served:** Ages 4+

**Services Provided:**

- Treatment for those with emotional, behavior or mental disabilities
- Adult Mental Health Service
- Child and Adolescents Mental Health Service
- Early Childhood Intervention

- And many more programs

**Notes:**

Call 1-800-758-3344 to access services or visit office during business hours. For any questions, email [behavioralhealth@bettyhardwick.org](mailto:behavioralhealth@bettyhardwick.org)

## Beyond Trafficking

**Point of Contact:** Stephanie Andrade-Rocha

**Email:** [stephanie.rocha@beyondtrafficking.com](mailto:stephanie.rocha@beyondtrafficking.com)

**Phone:** 325-338-2166

**Address:** 3300 S 14th St, Suite 213 Abilene, TX 79605

**Website:** [www.beyondtrafficking.com](http://www.beyondtrafficking.com)

**Service Areas:** 19 surrounding counties

**Type of Agency:** Faith Based, Labor Trafficking, Sex Trafficking

**Clients Served:** Adults

**Services Provided:** To be a secure and trustworthy refuge for survivors of human trafficking and to bring awareness through education to the Big Country.

## Big Country CASA

**Point of Contact:** Martha Guelker

**Email:** [marthaguelker@bigcountrycasa.org](mailto:marthaguelker@bigcountrycasa.org)

**Phone:** 325-677-6448

**Address:** 400 Oak Street, Suite. 217, Abilene, TX 79602

**Website:** [Home - Big Country CASA \(www.bigcountrycasa.org\)](http://www.bigcountrycasa.org)

**Service Areas:** Taylor County

**Type of Agency:** Advocacy, Child Welfare

**Clients Served:** Minors

**Services Provided:**

- Big Country CASA advocates for the best interest of abused and neglected children in the court system through trained community volunteers.

## Center for Life Resources

**Phone:** 325-646-9574 ext. 291

**Address:** 408 ½ Mulberry Street, Brownwood, TX 76801

**Website:** [Providing services and opportunities for enhancing the quality of life for the people of Central Texas. \(cflr.us\)](http://cflr.us)



**Type of Agency:** Substance Use, Treatment and Counseling

**Clients Served:** Men, Women and Youth

**Services Provided:** Outpatient Treatment

**Note:** Will accept referrals from OSAR, other organizations or family members.

## Child Care Services

**Phone:** 325-795-4200 or 800-457-5633

**Address:** 500 Chestnut Suite 1100, Abilene, TX 79602

**Website:** [Child Care Services | Workforce Solutions of West Central Texas, TX \(wfswct.org\)](http://wfswct.org)

**Type of Agency:** Child Welfare

**Clients Served:** Men, Women and Youth

**Services Provided:** Workforce Solutions' Child Care Services (CCS) program offers financial assistance to help qualifying families pay their childcare expenses so they can work, go to school or attend a training program.

**Note:** Families receiving childcare assistance must meet federal, state and local guidelines in order to qualify for childcare assistance.

## Christian Homes

**Point of Contact:** Sherri T. Statler

**Email:** [sstatler@ChristianHomes.com](mailto:sstatler@ChristianHomes.com)

**Phone:** 325-677-2205

**Address:** 1202 Estates Drive, Abilene, TX 79602

**Website:** [Christian Adoption Agency, Unplanned Pregnancy Help - Christian Homes and Family Services](http://www.christianhomes.com)  
([www.christianhomes.com](http://www.christianhomes.com))

**Service Areas:** Licensed in Texas and Oklahoma

**Type of Agency:** Faith-based, Child Welfare

**Clients Served:** US Citizens; Foreign Nationals; Adults; Minors

**Services Provided:**

- We change lives and build Christian families through maternity, foster care and adoption services.
- Free maternity care including housing for women with unplanned pregnancies; licensed foster care for children in the custody of CPS; vet and equip Christian couples who want to foster and/or adopt.

## Christian Service Center of Abilene

**Phone:** 325-673-7531

**Address:** 3185 N 10<sup>th</sup> Street, Abilene, TX 79603

**Website:** [Christian Service Center - Abilene \(cscabilene.org\)](http://cscabilene.org)

**Type of Agency:** Clothing/Hygiene, Faith Based, Food Pantry/Meal Programs

**Clients Served:** Serves all ages

### **Services Provided:**

- Services provided by appointment only (come by office or call to make appointment for following day. Please bring: ID, driver's license, Social Security Card)
- Rent/Water Bill assistance (last working day of the month, requirement: 12 hours of community service)
- Dental assistance (first working day of the month)
- Clean, gently used donate items including bedding, towels, kitchenware, small appliances, clothing, adult & baby diapers,
- Financial assistance can include food, gas vouchers, box fans, ID certificates, rent, prescriptions, sack lunches, day bus pass, space heater, hygiene items and water bills.
- Frequency/Limitations of certain services do apply and are available on the website or official flyer.

## Christian Women's Job Corps of Abilene

**Phone:** 325-693-6686

**Address:** 1450 N 17<sup>th</sup>, Abilene, TX 79601

**Website:** [Christian Women's Job Corps of Abilene \(cwjcabilene.org\)](http://cwjcabilene.org)

**Type of Agency:** Employment, Faith Based

**Clients Served:** Women

**Services Provided:**

- Job readiness training to women who have desire and are committed to becoming self-sufficient and are willing to stay alcohol and drug-free for the duration of the class.

## Eastland County Crisis Center

**Point of Contact:** Rhonda Howie

**Email:** [Director@eastlandcrisis.org](mailto:Director@eastlandcrisis.org)

**Phone:** 254-629-3223

**Address:** PO Box 1010, Eastland, TX 76448

**Website:** [Home \(eastlandcrisis.org\)](http://eastlandcrisis.org)

**Service Areas:** Eastland County

**Type of Agency:** Advocacy, Sexual Assault/Domestic Violence/Family Violence

**Clients Served:** US Citizens; Adults; Minors; Foreign Nationals; LGBTQ

**Services Provided:**

- The Eastland County Crisis Center is a 501(c)3 non-profit agency offering crisis counseling, advocacy, and accompaniment services to victims and survivors of Domestic Violence and Sexual Assault in Eastland County. All services are provided by licensed professionals and/or state certified staff and volunteers.
- Provides services designed to meet the physical, social, and emotional needs of domestic violence and sexual assault victims by providing immediate, short, and long-term assistance.
- Our goals are:
  - To decrease the impact of domestic violence and sexual assault on primary and secondary victims.
  - To present information and support to victims and their families that allows them to make choices that are most appropriate for his/her own needs.
  - To recognize limitations in the services offered by our agency and take responsibilities in working closely with referral agencies for effective management of victims and their families
  - To promote stabilization and emotional health
- Services Provided:
  - Services provided include Child Advocacy Center & Crime Victim Assistance Center
  - Individual and/or group life skills programs
  - Transportation to shelters
  - Legal advocacy, law enforcement accompaniment and court accompaniment

- Accompaniment & transportation to hospitals/medical appointments
- 24 Hour in person/over the phone crisis intervention services are provided to adult's survivors of both stranger and non-stranger sexual assault.
- Professional counseling and support to victims of violence
- Access and referrals to county, statewide, and national service agencies
- Primary prevention education seminars for community and school districts
- A safe place for clients to meet during court appearances.
- Training for volunteers and local service agencies to prepare them for responding to victims

## Education Service Center

**Point of Contact:** Tina Haywood

**Email:** [thaywood@esc14.net](mailto:thaywood@esc14.net)

**Phone:** 325-675-8624

**Address:**

- ESC 14 North location: 1850 Highway 351, Abilene, TX 79601
- ESC 14 South location: 4300 S. Treadaway, Abilene, TX 79602

**Website:** [www.esc14.net](http://www.esc14.net)

**Service Areas:** Counties: Stonewall, Haskell, Scurry, Fisher, Jones, Shackelford, Stephens, Mitchell, Nolan, Taylor, Callahan, Eastland, Comanche

**Type of Agency:** Academia

**Clients Served:** Adults; Minors

**Services Provided:**

Regional Education Service Centers shall:

1. assist school districts in improving student performance in each region of the system;
2. enable school districts to operate more efficiently and economically; and
3. implement initiatives assigned by the legislature or the commissioner. "

Services provided: Services to school districts:

- In support of school administration, they provide services in such areas as computer support for business and student services, administrator training, bus driver training, and cooperative purchasing.
- Centers provide a wide range of curriculum improvement and staff development opportunities for teachers.
- Technical assistance and training in instructional technology, programs for special populations, and staff development in instructional improvement are the most common.
- Centers also operate cooperatives among school districts for programs such as drug abuse prevention, migrant education, accelerated schools, and adult education.
- HT training to educators, resources for implementing legislative initiatives; McKinney Vento/Foster Care training, support & technical assistance

## Emerald of the Sea

**Point of Contact:** Esmeralda Ridilla

**Email:** [esmeralda@emeraldofthesea.org](mailto:esmeralda@emeraldofthesea.org)

**Phone:** 325-261-9065

**Address:** 598 Westwood Drive, Suite 101, Abilene, TX 79603

**Website:** [About Us \(emeraldofthesea.org\)](http://emeraldofthesea.org)

**Service Areas:** Physically serving in Abilene and serving virtually across the US

**Type of Agency:** Faith-based, Sex Trafficking, Sexual Assault/Domestic Violence/Family Violence

**Clients Served:** Adults

**Services Provided:**

- Individualized growth plan assigned support group & mentor, accountability partners, private "Facebook group" community, instant messaging chat room, therapeutic activities & projects, one on one coaching sessions.
- Survivor Retreats and Conferences, Facilitate Youth Trafficking Prevention through Love 146 Not a number curriculum, facilitate child abuse/sexual exploitation prevention trainings for adults through Darkness 2 Light, provide workshops for churches/faith-based ministries to learn how to effectively serve survivors as a church.



## FaithWorks of Abilene

**Phone:** 325-437-2272

**Address:** 1229 North Mockingbird Lane, Abilene, TX 79603

**Website:** [Main Home - FaithWorks of Abilene \(www.faithworksofabilene.org\)](http://www.faithworksofabilene.org)

**Type of Agency:** Counseling, Employment, Faith Based

**Services Provided:**

- 13-week career development training program
- Computer software training
- Group and individual counseling
- Breakfast and lunch

## Family Services Center, Inc.

**Phone:** 325-646-5993

**Address:** 901 Avenue Brownwood, TX 76801

**Type of Agency:** Treatment and Counseling

**Clients Served:** Serves ALL ages

**Services Provided:** Individual, group and family counseling

## Goodwill Career Center

**Phone:** 325-676-7925

**Address:** 2200 North 1<sup>st</sup> Street, Abilene, TX 79601

**Website:** [www.Gwtcareercenter.org](http://www.Gwtcareercenter.org)

**Type of Agency:** Employment

### **Services Provided:**

- One-on-one career counseling
- Job readiness skills training including resume writing, interviewing skills and job search assistance
- Computer access and training
- Employability skills
- Job placement and retention

## Goodwill – West Texas

**Phone:** 325-676-7925

**Address:** 2200 North 1st St., Abilene, TX 79603

**Website:** [Non-Profit Thrift Store | Goodwill-West Texas \(goodwillwesttexas.org\)](http://Non-Profit Thrift Store | Goodwill-West Texas (goodwillwesttexas.org))

**Type of Agency:** Treatment and Counseling

**Clients served:** Ages 15-18

**Services Provided:**

- Youth Ahead opportunities include employment and classroom training material for individuals between 15-18 years old.
- The hiring age at Goodwill-West Texas starts at 16.

### Hardin-Simmons Social Work Department

**Point of Contact:** Melissa Milliorn, LMSW-IPR (Department Chair/Professor of Social Work)

**Email:** [milliorn@hsutx.edu](mailto:milliorn@hsutx.edu)

**Phone:** 325-670-1281

**Address:** 2200 Hickory, Abilene, TX 79698

**Website:** [A Baptist University in Texas | Hardin-Simmons University \(hsutx.edu\)](https://www.hsutx.edu)

**Type of Agency:** Academia and Education

**Services Provided:**

- serves as a continuing education provider for social work and other behavioral health licenses such as LPC, LMFT, etc.
- Other academic areas certainly conduct research, publication, and educational sessions/presentations in the community relevant to human trafficking

## Harmony Family Services

**Point of Contact:** Jamie Breed

**Email:** [jbreed@harmonyfs.org](mailto:jbreed@harmonyfs.org)

**Phone:** 325-672-7200

**Address:** 305 Grape Street, Abilene, TX 79601

**Website:** [Harmony Family Services \(www.harmonyfamilyservices.org\)](http://www.harmonyfamilyservices.org)

**Type of Agency:** Child Welfare, Housing/Shelter

**Clients Served:** Ages 5-17

**Services Provided:**

- Temporary shelter for homeless/runaway children and youth
- Emergency shelter for abused and neglected children
- Medical care
- Educational services
- Individual and family therapy
- Support for families in crisis
- Recreational and community activities
- 24/7 emergency shelter

## Hendrick Home for Children

**Point of Contact:** Holly Cox

**Email:** [HollyCox@HendrickHome.org](mailto:HollyCox@HendrickHome.org)

**Phone:** 325-692-0112

**Address:** 2758 Jeanette St., Abilene, TX 79602

**Website:** [Home - Hendrick Home for Children \(www.hendrickhome.org\)](http://www.hendrickhome.org)

**Type of Agency:** Housing/Shelter

**Clients Served:** Ages 5-15 OR single mothers and their children

**Services Provided:**

- Transitional Living
- Medical
- Dental
- Clothing

**Notes:**

- Background check
- Initial phone evaluation
- Evaluation Test
- Pre-placement visit
- The average stay is seven years, but many of the children remain through their college years.

## International Rescue Committee

**Point of Contact:** Amanda Butler

**Email:** [Amanda.butler@rescue.org](mailto:Amanda.butler@rescue.org)

**Phone:** 325-675-5643

**Address:** Suite 320, 3305 North 3<sup>rd</sup> St, Abilene, TX 79603

**Website:** [Rescue lives in Abilene, TX | International Rescue Committee \(IRC\) \(www.rescue.org/united-states/abilene-tx\)](http://www.rescue.org/united-states/abilene-tx)

**Service Areas:** Counties: Taylor, Brown, Callahan, Coleman, Comanche, Eastland, Fisher, Jones, Mitchell, Nolan, Runnels, Scurry, and Shackelford

**Type of Agency:** Labor Trafficking, Legal Assistance, Treatment and Counseling

**Services Provided:**

- Safety; Legal Shelter/Housing; Immigration; Employment; Education, Vocation, and ESL; Benefits; Child Care and Family Care; Physical Health; Mental Health; Cultural and Religious Groups; Community Supports; Substance Use; Counseling; Basic Personal Needs; Transportation

## Kinship Navigator Program – New Horizons

**Website:** [Kinship Support – New Horizons Families \(nh-families.org\)](http://Kinship Support – New Horizons Families (nh-families.org))

**Service Areas:** Counties: Taylor, Brown, Callahan, Coleman, Jones, McCulloch, Mills and San Saba

**Type of Agency:** Child Welfare, Treatment and Counseling

**Clients Served:** Available for any relative caregiver raising a child ages 0-18 years. Any relative who is raising a family member is eligible to receive support regardless of their legal status or CPS involvement.

**Services Provided:**

- Resource and Referral Assistance
- Basic Needs assistance
- Therapy for Caregivers
- Case management
- Parent Groups
- Kinship Caregiver Trainings

## Legal Aid of Northwest Texas

**Phone:** 800-933-8591

**Address:** 500 Chestnut, Ste. 901, Abilene, TX 79602

**Website:** [Home \(lanwt.org\)](http://Home (lanwt.org))

**Service Areas:** 114 Texas counties throughout North and West Texas, with offices in Abilene, Amarillo, Brownwood, Dallas, Denton, Fort Worth, Lubbock, McKinney, Midland, Odessa, Plainview, San Angelo, Waxahachie, Weatherford and Wichita Falls.

**Type of Agency:** Legal Assistance

**Clients Served:** Low-income residents

**Services Provided:** Free civil legal services

## Love and Care Ministries

**Phone:** 325-670-0246

**Address:** 233 Fannin St., Abilene, TX 79603

**Website:** [Love & Care Ministries | Serving The Homeless & Poor In Abilene, Merkel & Clyde Texas \(lcmin.com\)](http://www.lcmin.com)

**Type of Agency:** Food Pantry/Meal Programs, Clothing/Hygiene

**Clients Served:** Serves ALL ages

**Services Provided:**

- Food Pantry, Clothing (Abilene includes hot meals and Quiet Place)



## Mental Health America of Abilene

**Point of Contact:** Brenda Dagestad

**Email:** [brenda@abilenemha.org](mailto:brenda@abilenemha.org)

**Phone:** 325-673-2300

**Address:** P.O. Box 7282, Abilene, TX 79608

**Website:** [Mental Health America of Abilene | Mental Health America \(mhanational.org\)](#)

**Service Areas:** West Central Texas mostly, but will help and refer anyone who calls

**Type of Agency:** peer support-we met people where they are at and help them navigate the various systems agencies, Advocacy

**Clients Served:** US Citizens; Foreign Nationals; Adults; LGBTQ

**Services Provided:**

- One to one peer support, Wellness Recovery Action Plan (WRAP), helping people learn about and navigate mental health issues

**Goal:** We believe in providing leadership and support for hope, recovery, and mental wellness for all.

## Mercy Clinic (ATCPHD)

**Point of Contact:** Stephanie Lebowitz

**Email:** [stephanie.lebowitz@abilenetx.gov](mailto:stephanie.lebowitz@abilenetx.gov)

**Phone:** 325-437-4973

**Address:** 1902 Shelton Street, Abilene, TX 79601

**Website:** [Mercy Health Care Center | Abilene, TX \(abilenetx.gov\)](https://www.abilenetx.gov/mercy) ([www.abilenetx.gov/mercy](http://www.abilenetx.gov/mercy))

**Service Areas:** Counties: Taylor, Jones, Callahan, Fisher, Nolan

**Type of Agency:** Healthcare Provider, Labor Trafficking, Sex Trafficking

**Clients Served:** Foreign Nationals; US Citizens; LGBTQ; Adults; Minors

**Services Provided:**

- We are a clinic serving the medically underserved women and girls in the community. These women typically cannot afford to receive women's healthcare in other traditional settings. In addition, we provide the free STD testing for the community and PREP program for those needing that.

## New Beginnings Big Country

**Phone:** 325-665-5538

**Address:** New Beginnings Big Country, PO Box 4193, Abilene, TX 79608

**Website:** [New Beginnings - Big Country | Women's Transitional Home \(newbeginningsbigcountry.com\)](https://newbeginningsbigcountry.com)

**Type of Agency:** Faith Based, Housing/Shelter

**Clients Served:** Women coming out of jail/prison

**Services Provided:**

- Faith-based transitional housing
- Life-skills training

## Noah Project

**Point of Contact:** Melody Tait

**Email:** [melodyt@noahproject.org](mailto:melodyt@noahproject.org)

**Phone:** 325-676-7107

**Address:** 5802 Texas Ave, Abilene, TX 79605

**Website:** [Noah Project of Abilene | Advocating for Victims and Working to End Family Violence](http://www.noahproject.org)  
([www.noahproject.org](http://www.noahproject.org))

**Service Areas:** Counties: Knox, Stonewall, Haskell, Throckmorton, Jones, Shackelford, Stephens, Taylor, Callahan, and Eastland

**Type of Agency:** Sexual Assault/Human Trafficking Victim Advocate, Advocacy, Legal Assistance, Shelter, Sex Trafficking

**Clients Served:** US Citizens, Foreign Nationals, Adults, Minors, LGBTQ

## **Services Provided:**

- Shelter, Food & Clothing, Legal Services, Transportation and/or Accompaniment, Safety Planning, Crisis Counseling, Employment Assistance, Education Support, Referrals, Support Groups, Professional Counseling.
- Transitional housing, financial assistance (case-by-case), help/support navigating CPS, child advocacy, Family Violence Option for HHSC, Crime Victims Compensation/Address Confidentiality/Victim Impact Statement assistance, some relocation assistance.

**Mission:** The mission of Noah Project is empowering victims to become survivors and working to end domestic violence and sexual assault. Noah Project is a center of care for victims of family violence, serving ten counties in West Central Texas.

## **Goals:**

- To provide quality shelter and support services, under the guidelines of Noah Project, to persons who are victims of domestic violence, sexual assault, and human trafficking.
- Community education that raises awareness of the issues and solutions to domestic violence, sexual assault, and human trafficking.
- To be an effective advocate in the effort to strengthen laws and policies concerning domestic violence, sexual assault, and human trafficking.

## Oceans Behavioral Health Abilene

**Phone:**

- Hotline: 1-800-335-3498
- Office: 325-698-6600

**Address:** 4225 Woods Place, Abilene, TX 79602

**Website:** [Oceans Behavioral Hospital Abilene \(oceanshealthcare.com\)](http://oceanshealthcare.com)

**Type of Agency:** Treatment and Counseling

**Clients Served:** Services for ages 4+

**Services Provided:** Treatment

## Palm House

**Point of Contact:** Marla Polk, President of the Board of Palm House

**Email:** [Marla@resolutionsolutions.net](mailto:Marla@resolutionsolutions.net)

**Phone:** 325-338-9141

**Address:** 433 Palm, Abilene, TX 79602

**Website:** [palmhouseabilene.org](http://palmhouseabilene.org)

**Service Areas:** Taylor County and surrounding

**Type of Agency:** Advocacy, Faith-based

**Clients Served:** US Citizens, Foreign Nationals, Adults, Minors, LGBTQ

**Services Provided:**

- A communication coaching group for women who have suffered trauma
- **Our vision**, at its most basic form, is to see people and the neighborhood they live in transformed by the power of love. By building trust through relationship, we aim to restore life and hope where there is brokenness and loss of identity. The Palm House itself was a broken home that was brought back to life because people saw it for what it could be rather than what it was. It now serves as a prototype of what we aim to see take place in lives and homes around us.
- **Our Mission** is to offer the people in our neighborhood and beyond the practical and spiritual tools necessary to have a fulfilling life and cultivate a relationship with God. Through mentoring programs, outreach, service, and consistent interaction, we hope to encourage people into their destinies and provide hope and identity where it has been lost. We believe in the context of "home," and aim to provide a safe and loving environment to which people always feel welcome to come. We are also equally as motivated to go outside the four walls of the Palm House and into the neighborhood and city of Abilene.

## Pathways – Youth and Family Services

**Phone:** (325) 692-4048

**Address:** 4150 Southwest Drive, Suite 216, Abilene, TX 79606

**Website:** [Pathways Youth & Family Services | Adoption & Foster Care Services \(www.pathway.org\)](http://www.pathway.org)

**Type of Agency:** Child Welfare, Treatment and Counseling

**Clients Served:** Children, Youth and Families

**Services Provided:**

- Foster Care and Adoption (recruit, train and support families who wish to adopt)
- Mosaic Behavioral Health (community-based care, including therapy, counseling and psychiatry)
- 3H Youth Ranch (For young men: Education, Community Service, High Adventure)
- Habilitative Homes (licensed Residential Treatment center providing 24-hour child-care and treatment services to children with intellectual and/or developmental disabilities, including Autism Spectrum Disorder and borderline intellectual functioning)

## Project Phoenix Program – YMCA

**Phone:** 325-733-6909

**Address:** 3125 South 32<sup>nd</sup> Street, Abilene, TX 79605

**Website:** [Community & Outreach | YMCA of Abilene \(abileneymca.org\)](http://Community & Outreach | YMCA of Abilene (abileneymca.org))

([www.abileneymca.org/programs/community-outreach](http://www.abileneymca.org/programs/community-outreach))

**Type of Agency:** Child Welfare, Treatment and Counseling

**Clients Served:** Ages 7-17

**Services Provided:**

- Behavioral modification program for at-risk youth that have demonstrated difficult behaviors. Services:
- Counseling
- Mentoring
- Anger management training
- Other unique activities to help the youth develop skills for positive decision-making.

## Regional Victim Crisis Center

**Point of Contact:** Janey Wawerna, Executive Director

**Email:** [info@regionalvictimcrisiscenter.org](mailto:info@regionalvictimcrisiscenter.org)

**Phone:** 325-677-7895



**Website:** [Regional Victim Crisis Center - Abilene, Texas - Home \(www.regionalvictimcrisiscenter.org\)](http://www.regionalvictimcrisiscenter.org)

**Service Areas:** Abilene and surrounding areas

**Type of Agency:** CSEY Advocacy, Sex Trafficking, Sexual Assault/Domestic Violence/Family Violence, Treatment and Counseling

**Clients Served:** Assault (includes bullying of and by children), Aggravated assault, Sexual assault, Rape, Child sexual assault, Robbery, Stalking, Homicide (murder) victims' families and friends, Adults molested as children.

**Services Provided:**

- RVCC's Crisis Hotline is answered 24 hours a day, 7 days a week by a Certified Victim Advocate.
- Walk-in assistance is available during business hours: Monday – Thursday 8:30 am – 5:00 pm; Friday 8:30 am - 12:00 noon. Call the hotline 325-677-7895 for location.
- **Crisis Intervention**
  - Provided to child and adult survivors of stranger and non-stranger sexual assault. Certified Victim Advocates respond to the immediate needs of survivors during the trauma resulting from sexual assault and other violence.
- **Advocacy**
  - Providing information on victims' rights; communicating with law enforcement, medical personnel, Crime Victims Compensation, and other agencies on behalf of the survivor.
- **Accompaniment**

- RVCC Certified Victim Advocates accompany survivors to hospitals, law enforcement offices, prosecutors' offices, and courts
- **Other Services:**
  - Counseling with licensed therapists who specialize in helping survivors recover from the trauma of sexual assault and other violence
  - Help with filing for Crime Victims Compensation
  - Support and information through the criminal justice process
- Referral to community resources

## Resource Care – Community Health Center

### Albany

**Phone:** 325-762-2447

**Address:** 725 Pate St., PO Box 2435, Albany, TX 76430

### Baird

**Phone:** 325-854-1365

**Address:** 527 Peyton St., Baird, TX 79504

### Breckenridge

**Phone:** 254-559-7215

**Address:** 2802 West Walker St., Breckenridge, TX 76424

### **Clyde**

**Phone:** 325-893-4010

**Address:** 1712 North Access Road, PO Box 679, Clyde, TX 79510

### **Cross Plains**

**Phone:** 254-725-4311

**Address:** 301 South Main St, Cross Plains, TX 76443

### **Merkel**

**Phone:** 325-928-0014

**Address:** 217 Edwards St, Merkel, TX 79536

**Website:** [ResourceCare Community Health Center | Texas \(www.resourcecare.org\)](http://www.resourcecare.org)

**Type of Agency:** Healthcare Provider, Treatment and Counseling

**Clients Served:** All ages

### **Services Provided:**

- Medical
- Dental
- Behavioral Health

- Counseling
- Outreach
- Interpretation Services

**Note:** Resource Care happily accepts Medicaid, Medicare CHIP and most private insurances. Income based discounts are available for ALL who qualify!

## Safe Families

**Point of Contact:** Ronica Worgull

**Email:** [rworgull@yahoo.com](mailto:rworgull@yahoo.com)

**Phone:** 325-280-5873

**Address:** 1100 Hwy 80 E. Abilene, TX 79601

**Website:** [Meet Our Chapter - Abilene \(safe-families.org\)](http://Meet-Our-Chapter-Abilene-safe-families.org)

**Service Areas:** Abilene and any surrounding areas with a Safe Families Church within a 30-mile radius

**Type of Agency:** Child Welfare, Faith-based, host children of socially isolated parents and coach parents

**Clients Served:** US Citizens; Foreign Nationals; Adults; Minors; LGBTQ; Parenting adults or single 18-20 yr. old

**Services Provided:**

- Vision: Creating a world where children are safe, and families transformed through radically compassionate communities
- Mission: Safe Families for Children hosts vulnerable children and creates extended family–like supports for desperate families through a community of devoted volunteers who are motivated by compassion to keep children safe and families intact.
- Our Objectives -The three objectives of Safe Families for Children are:
  1. Keep children safe during a family crisis such as homelessness, hospitalization, or domestic violence in an effort to prevent child abuse and/or neglect.
  2. Support, and stabilize families in crisis by surrounding them with caring, compassionate community.
  3. Reunite families and reduce the number of children entering the child welfare system. We seek to be an alternative to foster care, where appropriate.
- Safe Families for Children – Abilene surrounds families in crisis with caring, compassionate community. We are a nonprofit, volunteer movement that provides hope and support to families in our local community.
- Serving the Abilene area, we create extended family–like supports for desperate families through a community of devoted volunteers who are motivated by faith to keep children safe and keep families intact.

## Salvation Army

**Phone:** 325-677-1408

**Address:** 1726 Butternut Street, Abilene, TX 79602

**Website:** [The Salvation Army of Abilene | Serving Those in Need Since 1889 \(salvationarmytexas.org\)](http://salvationarmytexas.org)

**Type of Agency:** Housing/Shelter, Treatment and Counseling, Food Pantry/Meal Program, Clothing/Hygiene

**Clients Served:** Serves ALL ages

**Services Provided:** Temporary shelter

## Sara's House – Alcohol and Drug Abuse Council for the Concho Valley

**Phone:** 325-224-3481

**Address:** 401 West Twohig Street, San Angelo, TX 76902

**Website:** [Alcohol & Drug Abuse Council for the Concho Valley \(adaccv.org\)](http://adaccv.org)

**Type of Agency:** Substance Use, Treatment and Counseling

**Clients Served:** Women, women with children 0-5 ½ years old

**Services Provided:** Residential Treatment

**Note:** Will accept referrals from OSAR or other state organizations. Based upon bed availability, client may be placed on a waitlist.

## Serenity House

**Phone:** 325-673-6489 or 866-795-4673

**Address:** 1546 North 2<sup>nd</sup> Street, Abilene, TX 79601

**Website:** [Serenity House | Drug & Alcohol Rehabilitation | Abilene, TX - Fredericksburg, TX \(serenitytexas.com\)](#)

**Type of Agency:** Substance Use, Treatment and Recovery

**Clients Served:** Serves ALL ages

### Services Provided:

- Substance use detoxification
- Residential treatment beds
- Outpatient treatment
- Family programs
- Prevention education services for youth to fight addiction
- Case management/aftercare to assist with ongoing client needs

## Shades of Hope

**Phone:** 325-572-3843

**Address:** 402-A Mulberry Street, Buffalo Gap, TX 79508

**Website:** [Residential/Inpatient Program | Shades of Hope Treatment Center \(www.shadesofhope.com\)](#)

**Type of Agency:** Treatment and Counseling

**Clients Served:** Ages 17+

**Services Provided:**

- Residential all-addictions treatment center, including care for self-harm and eating disorders

## STAR Program – New Horizons

**Phone:** 325-437-1852

**Address:** 147 Sayles Blvd., Abilene, TX 79605

**Website:** [Family and Youth Success Counseling Program \(Previously STAR\) - New Horizons \(newhorizonsinc.com\)](http://newhorizonsinc.com)

**Type of Agency:** Child Welfare, Treatment and Counseling

**Clients Served:** Services for ages 4+, FREE counseling services for ages 6-17 who are experiencing family conflict

**Services Provided:**

- Family crisis intervention counseling
- Short-term emergency residential care
- Individual and family counseling
- And many more



## Texas Tech University Health Sciences Center

**Point of Contact:** Julie St. John

**Email:** [julie.st-john@ttuhsc.edu](mailto:julie.st-john@ttuhsc.edu)

**Phone:** 325-696-0473

**Address:** 1650 Pine Street, Abilene, TX 79601

**Website:** [Julia Jones Matthews Department of Public Health | Texas Tech University Health Sciences Center \(ttuhsc.edu\)](http://www.ttuhsc.edu/biomedical-sciences/public-health/default.aspx) ([www.ttuhsc.edu/biomedical-sciences/public-health/default.aspx](http://www.ttuhsc.edu/biomedical-sciences/public-health/default.aspx))

**Service Areas:** local, state, national, international

**Type of Agency:** Academia

**Clients Served:** US Citizens; Foreign Nationals; Minors; Adults; LGBTQ

**Services Provided:**

- We conduct public health research, training, teaching, and practice--including human trafficking and social justice.

## United Way Abilene

**Point of Contact:** Mary Cooksey

**Email:** [mary@unitedwayabilene.org](mailto:mary@unitedwayabilene.org)

**Phone:** 325-673-8211

**Address:** 240 Cypress St, Abilene, TX 79601

**Website:** [A Call For Help \(communityos.org\)](http://communityos.org) ([www.acallforhelp.info](http://www.acallforhelp.info))

**Service Areas:** 19-counties of West Central Texas

**Type of Agency:** Social Services/NGO

**Clients Served:** US Citizens, Foreign Nationals, Adults, Minors, LGBTQ, open to the public

**Services Provided:**

- United Way of Abilene brings the community together to make positive, measurable, and lasting change in our area. We focus on three areas: education, financial stability, and health.
- 2-1-1 Texas A Call for Help maintains a comprehensive resource database and provides free confidential information about and referrals to agencies and organizations providing health and human services. Links people with appropriate/available resources to meet a variety of needs, including finding food pantries, childcare, utility bill payment assistance and more.

### William's House – Alcohol and Drug Abuse Council for the Concho Valley

**Phone:** 324-224-3481

**Address:** 134 West College Ave, San Angelo, TX 76903

**Website:** [Alcohol & Drug Abuse Council for the Concho Valley \(adaccv.org\)](http://adaccv.org)

**Type of Agency:** Substance Use, Treatment and Counseling

**Clients Served:** Men

**Services Provided:** Substance Use Treatment

**Note:** Will accept referrals from OSAR or other state organizations. Based upon bed availability, client may be placed on a waitlist.

## Workforce Solutions

**Phone:** 940-723-8774 o 1-800-232-8359

**Address:** 4309 Jacksboro Hwy, Ste 230, Wichita Falls, TX, 76302

**Website:** [Workforce Solutions of West Central Texas, TX | Official Website \(wfswwct.org\)](http://www.wfswct.org)

**Type of Agency:** Child Welfare

**Clients Served:** Low-income families

**Services Provided:** Childcare for low-income families, however, the parent/guardian must be working for at least two weeks before services will be provided.

## Food Pantries by Weekdays (Abilene)

### **Monday**

Christian Ministries of Abilene – 701 Walnut Street: 9:30-11:30am, 1-2pm

Crescent Heights Baptist Church – 1902 N Mockingbird Ln.: 10am-12pm

Love & Care Ministries – 233 Fannin: 1-3pm

Christian Service Center – 3185 N 10<sup>th</sup> Street: Mon.-Fri. with appointment only (325-673-7531)

### **Tuesday**

Love & Care Ministries – 233 Fannin: 9-11:30am, 1-3pm

Baptist Social Ministries – 618 S Pioneer: 1-3pm

Presbyterian Food Pantry – 333 Orange St.: 1-4pm

Beltway Park Church (South) – 4009 Beltway South: 1-4pm

United Methodist Food Pantry – 2626 N 1<sup>st</sup> St.: 4-8pm

### **Wednesday**

United Methodist Food Pantry – 2626 N 1<sup>st</sup> St.: 9am-1pm

Love & Care Ministries – 233 Fannin: 9-11:30am, 1-3pm

Baptist Social Ministries – 618 S Pioneer: 1-3pm

### **Thursday**

Beltway Park Church (South) – 4009 Beltway South: 9am-12pm

Love & Care Ministries – 233 Fannin: 9-11:30am, 1-3pm

Baptist Social Ministries – 618 S Pioneer: 1-3pm (4<sup>th</sup> Thursday only 5:30-7pm)

Christian Ministries of Abilene – 701 Walnut Street: 6-7:15pm

### **Friday**

Christian Ministries of Abilene – 701 Walnut Street: 9:30-11:30am, 1-2pm

## Services Outside the Area

### Cenikor

**Phone:** 713-726-0922

**Address:** 5629 Grapevine Street, Houston, TX 77085

**Website:** [Cenikor - Well Beyond Recovery \(www.cenikor.org\)](http://www.cenikor.org)

**Type of Agency:** Substance Use, Treatment and Counseling

**Clients Served:** Adolescents, male or female, ages 13-17 (at the time of admission, willing and voluntary to admit to the program and comply with the structure, rules and their individual treatment issues and goal.)

**Services Provided:** 60–90-day inpatient

**Note:**

- This is an unlocked, free-standing facility and therefore the applicant's evaluation will include their individual treatment and safety needs in accordance with the capability of the program.
- Accepts OSAR referrals, in addition to referral a phone call to complete phone intake is required. If the adolescent appears eligible for the program, an admission interview will be scheduled for the adolescent with the parent/guardian. A common application is not required.

## Nexus

**Phone:** 214-321-0156 ext. 2602

**Address:** 8733 La Prada Drive, Dallas, TX 75228

**Website:** [Nexus Recovery \(www.nexusrecovery.org\)](http://www.nexusrecovery.org)

**Type of Agency:** Substance Use, Treatment and Counseling

**Clients Served:** girls ages 13-17, including those pregnant

**Services Provided:** 90 days, depending on process

**Note:**

- Accepts OSAR referrals Common application not required but if client is court ordered a copy of the order is helpful.

## Phoenix House

### **Phoenix House Academy in Austin**

**Point of Contact:** Kelly Garrett-Aubry

**Email:** [KGarrett-Aubry@phoenixhouse.org](mailto:KGarrett-Aubry@phoenixhouse.org)

**Phone:** 844-217-4798

**Address:** 400 W Lice Oak Street, Austin, TX 78704

**Website:** [Phoenix Houses \(www.phoenixhouse.org\)](http://www.phoenixhouse.org)

**Type of Agency:** Substance Use, Treatment and Counseling

**Clients Served:** boys and girls ages 13-17 years, who struggle with substance abuse and co-occurring mental health problems

#### **Services Provided:**

- Residential drug and alcohol addiction treatment services
- Intensive outpatient services
- Evidence-based programming
- 12-step work for substance abuse
- Cognitive behavioral therapy
- Trauma-informed therapy

**Note:**

- Accepts OSAR referrals. In addition to referral, a phone intake must be completed. Accepts self-pay and private insurance. The adolescent residential and intensive outpatient services accept some managed Medicaid, CHIP, Department of State and Human Services and Northstar plans.

**Phoenix House Hill A. Feinberg Academy**

**Point of Contact:** Drew Dutton

**Email:** [texas@phoenixhouse.org](mailto:texas@phoenixhouse.org)

**Phone:** 844-217-4798

**Address:** 2345 Reagan Street, Dallas, TX 75219

**Website:** [Phoenix Houses \(www.phoenixhouse.org\)](http://www.phoenixhouse.org)

**Type of Agency:** Substance Use, Treatment and Counseling

**Clients Served:** boys and girls ages 13-17 years, who struggle with alcohol, marijuana or other substance abuse and co-occurring mental health issues.

**Services Provided:**

- Residential drug and alcohol addiction treatment services
- Intensive outpatient services
- Dallas Independent School District credit recovery program



**Note:**

- Accepts OSAR referrals. In addition to referral, a phone intake must be completed. Accepts self-pay and private insurance. The adolescent residential and intensive outpatient services accept some managed Medicaid, CHIP, Department of State and Human Services and Northstar plans.

## Reed Adolescent Center

**Phone:** 940-552-9901

**Address:** 404 Floydada Street, Plainview, TX 79072

**Website:** [Central Plains Center \(www.centralplains.org\)](http://www.centralplains.org)

**Type of Agency:** Substance Use, Treatment and Counseling

**Clients Served:** boys ages 13-17 years

**Services Provided:**

- 12-bed residential substance abuse treatment facility
- 30–90-day treatment program

**Note:** Accepts OSAR referrals and private insurance

## Selena Center

**Phone:** 210-223-4004

**Address:** 248 Post Avenue, San Antonio, TX 78215

**Website:** [San Antonio Services - Association for the Advancement of Mexican Americans \(aama.org\)](http://www.aama.org)

**Type of Agency:** Substance Use, Treatment and Counseling

**Clients Served:** girls ages 13-17 years, who have a substance use disorder

**Services Provided:**

- 90-day residential treatment
- Capacity for 16 girls
- Intensive and supportive services
- During their residency, girls attend San Antonio schools
- After residential treatment, girls participate in AAMA's outpatient and aftercare services

**Note:**

- Accepts OSAR referrals. Common application and most recent psych evaluation is required if being referred by juvenile probation or in juvenile detention center.

## Tarrant Youth Recovery Campus

**Phone:** 817-569-4270

**Address:** 1527 Hemphill, Fort Worth, TX 76104

**Website:** [My Health My Resources of Tarrant County – We change lives \(mhmrtarrant.org\)](http://mhmrtarrant.org)

**Type of Agency:** Substance Use, Treatment and Counseling

**Clients Served:** males ages 13-17 years

**Services Provided:**

- 16-bed, full-time residential recovery program
- Average stay is 45-60 days
- Treatment for co-occurring psychiatric disorders

**Note:**

- Clients are referred from several Juvenile Probation offices, truancy courts, and school districts.
- Self-referred youth are accepted.
- Accepts OSAR referrals. Common application not required. Probation officer can contact treatment center and let them know they have an OSAR referral.

## Unlimited Visions

**Phone:** 713-534-8191

**Address:** 907 Preston, Pasadena, X 77503

**Website:** [Home \(unlimitedvisions.org\)](http://unlimitedvisions.org)

**Type of Agency:** Substance Use, Treatment and Counseling

**Clients Served:** adolescents, male and female

**Services Provided:**

- 90-day program at secured facility with gated property and 24-hour monitoring
- 52-Bed facility

**Note:**

- Accepts OSAR referrals. Common application not required if recent psych evaluation was conducted.